







*The hardtop option*



*The steering pedestal has push button controls for "everything" and space for a built in 12 inch plotter*

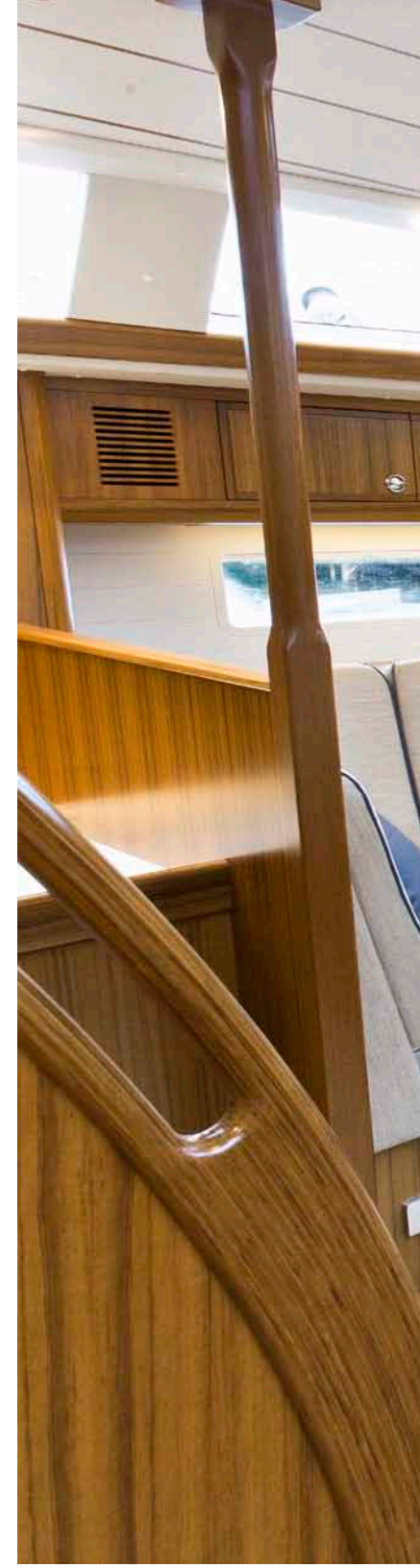




*Comfort worthy  
a King*



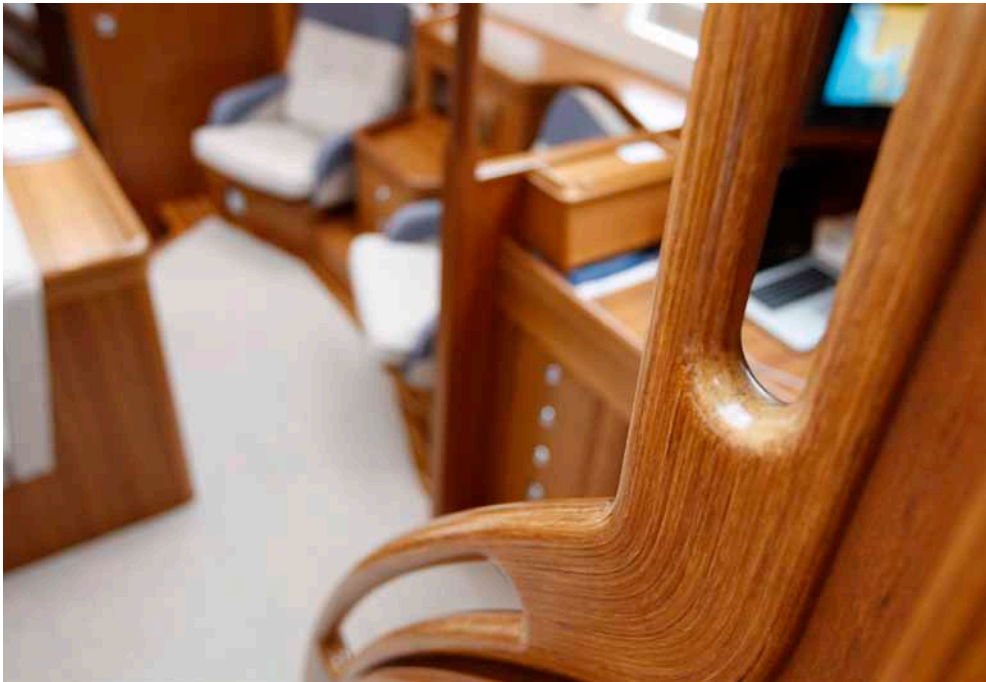
**R** Hallberg-Rassy







*Opening forward portlights in the saloon*



*Elegant and sturdy curved handhold at the entrance stairs*



*Optional 40 inch LED TV in the centre sofa*





*Large side and front portlights, four skylights and four hull windows bathe the saloon in natural light*



*Six hull portlights*



*Hull portlights allows for sight out in eye level while seated*



*Blinds for the large saloon portlights*



*Optional wine cooler in the forward part of the saloon*



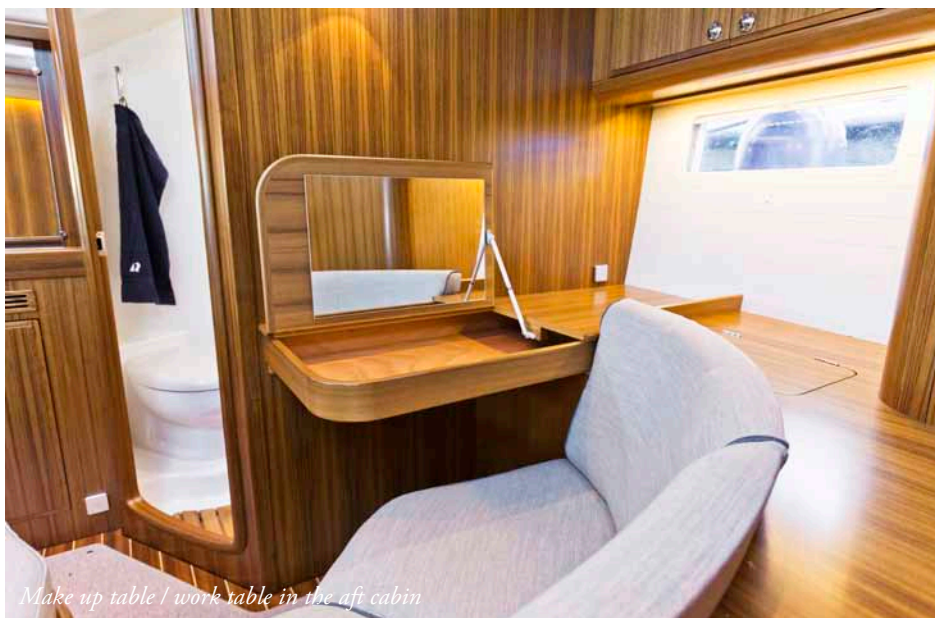
*The saloon seen from the forward end*



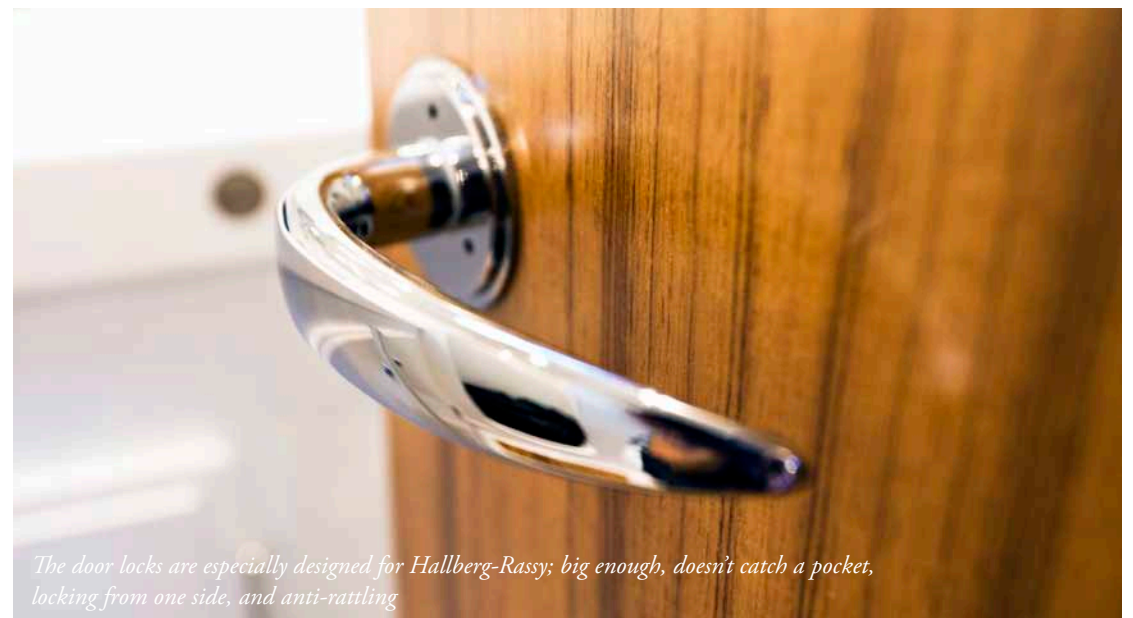
*Optional electric tilt control of the aft beds*



*The aft cabin, to the left the entrance door to the engine room*



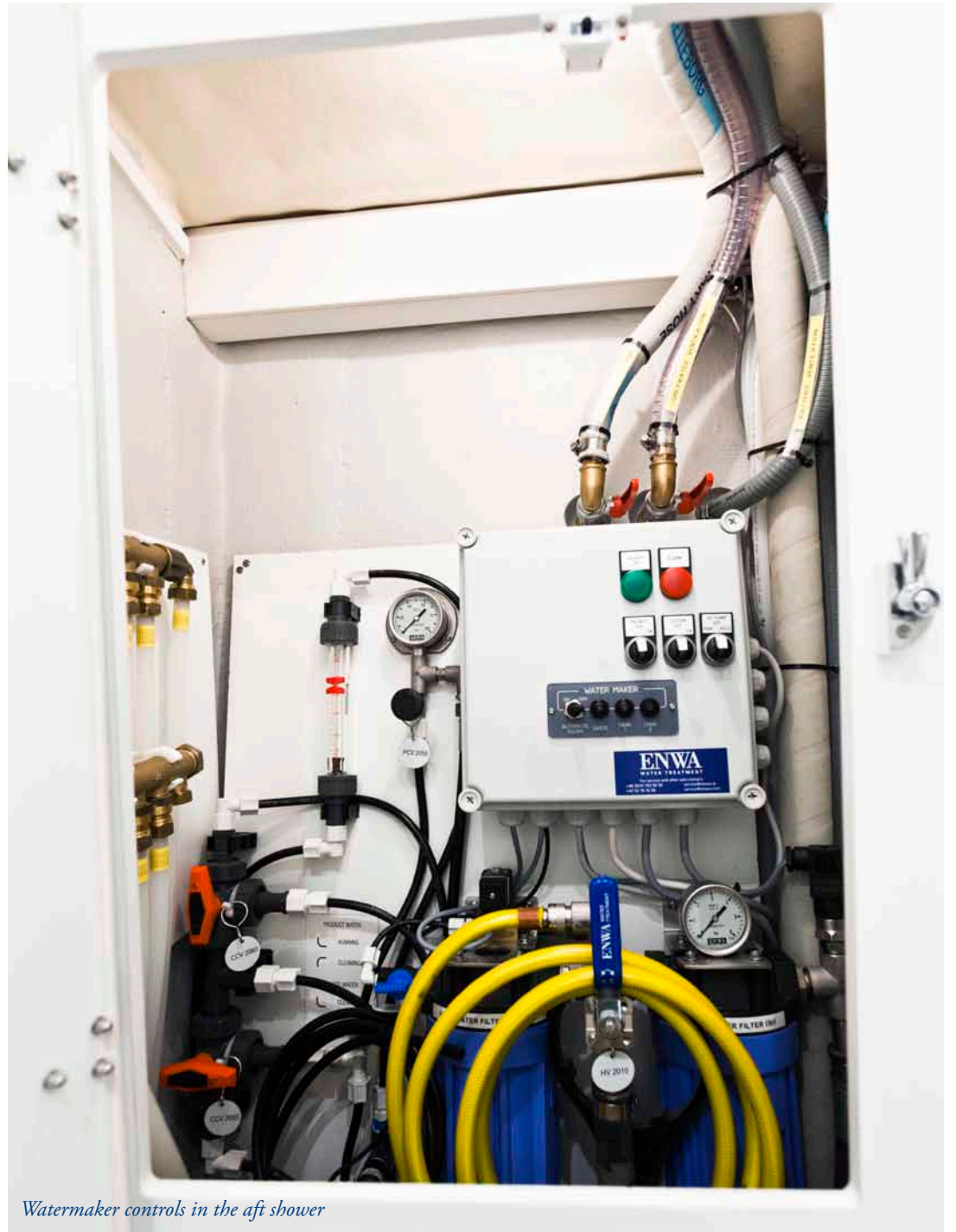
*Make up table / work table in the aft cabin*



*The door locks are especially designed for Hallberg-Rassy; big enough, doesn't catch a pocket, locking from one side, and anti-rattling*



*Aft cabin*



*Watermaker controls in the aft shower*

*In the aft shower, there is an optional washer/dryer built into the well sound insulated engine room*



*Aft heads, separate shower with plexi glass door and electric ventilation fan*





*The deck is clean and uncluttered*





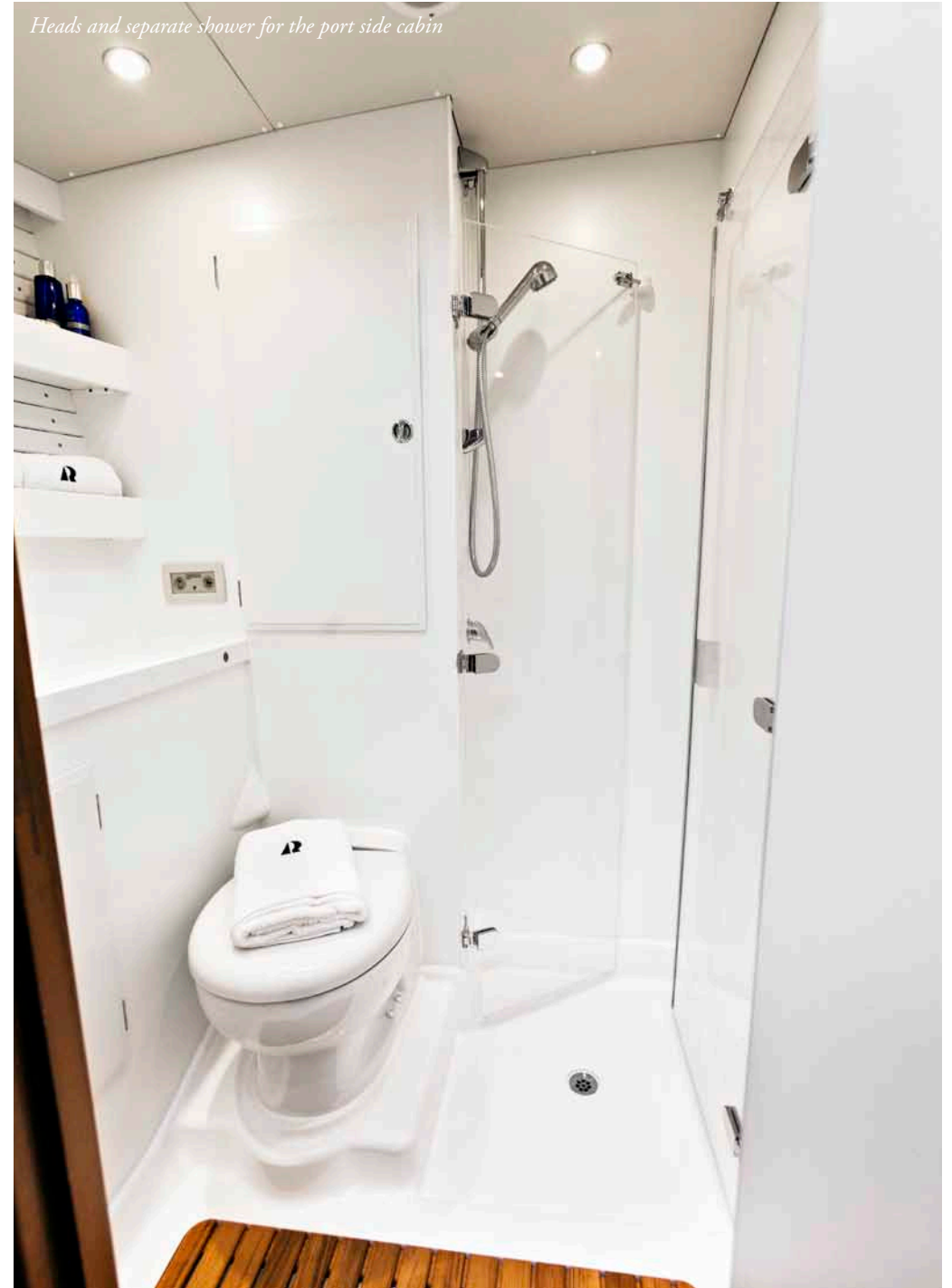
*The big walk-in engine room allows for easy maintenance and good sound insulation*



*The v cabin seen from the front*



*The v cabin seen from aft*



*Heads and separate shower for the port side cabin*



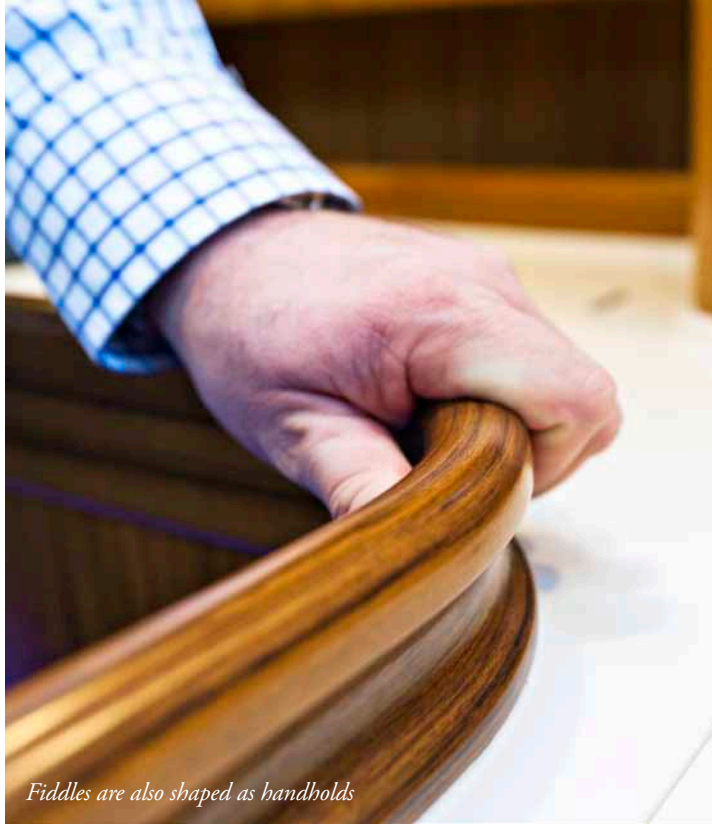
*The port side cabin*



*The elegant entrance stair lifts on gas springs to reveal further engine room access*



*The starboard cabin*



*Fiddles are also shaped as handholds*



*The enormous 8.6 cubic meter aft deck lockers may store a RIB dinghy*



*The sb side heads*





*The generous port side galley has two drawer fridges, one front opening door fridge and two separate freezers*



*Sliding doors reveal a dishwasher*



*Built-in optional dishwasher*



*Two generous drawer fridges in the port side galley*







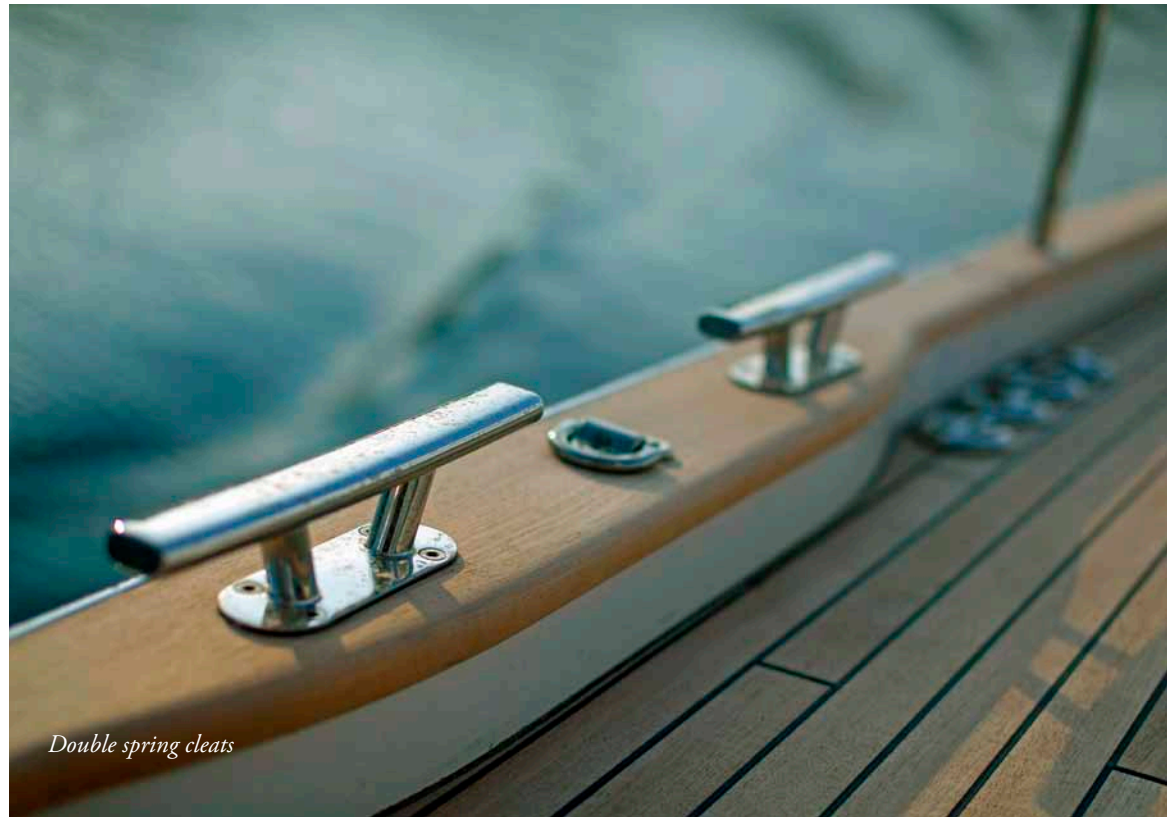




*The deck layout is clean and uncluttered. Optional under deck cutter furler.*



*Single point mainsheet with purchase and a hydraulic ram inside the boom, combined with an unusually powerful hydraulic vang*



*Double spring cleats*

*Hydraulic cutter furler comes with a diamond stay for additional stiffness in the upper part of the mast*



*The genoa furler is optionally under deck*





# HALLBERG-RASSY 64

Design	Germán Frers
Hull length	19.85 m / 65' 1"
Hull beam excl. rubbing strake	5.17 m / 17' 0"
Beam incl. rubbing strake	5.20 m / 17' 1"
Waterline at rest	17.53 m / 57' 6"
Draft at empty load	2.5 m / 8' 2"
Displacement, empty standard boat	36 ton / 79,500 lbs
Keel weight	12.7 ton / 28,000 lbs
Keel material	Lead
Sail area with battenless main and 100% fore triangle	173 m <sup>2</sup> / 1,861 sq ft
Sail area with battenless main and furling genoa	215 m <sup>2</sup> / 2,312 sq ft
Sail area, main with roach and battens and genoa	232 m <sup>2</sup> / 2,496 sq ft
Sail area, main with roach and battens, code zero	248 m <sup>2</sup> / 2,668 sq ft
Mast over water, excl. Windex	27.4 m / 89' 11"
Engine	Volvo Penta D6-280
Power	206 kW / 280 HP
Number of cylinders	6
Cylinder volume	5.5 litres
Max torque	669 Nm at 2 500 RPM
Tank volume, Diesel fuel	1,800 litres / 476 US gal.
Tank volume, fresh water	1,300 litres / 344 US gal.
Holding tanks	3 x 75 litres / 3 x 20 US gal.
CE category	A - Unlimited ocean voyages

Photos: Martin Sebastian Kreplin, Paul Wyeth/Yachting World/IPC+ Syndication, Peter Szamer and Magnus Rassy.

Photos show extra equipment. For more details please ask for our special Hallberg-Rassy 64 Standard Specification.

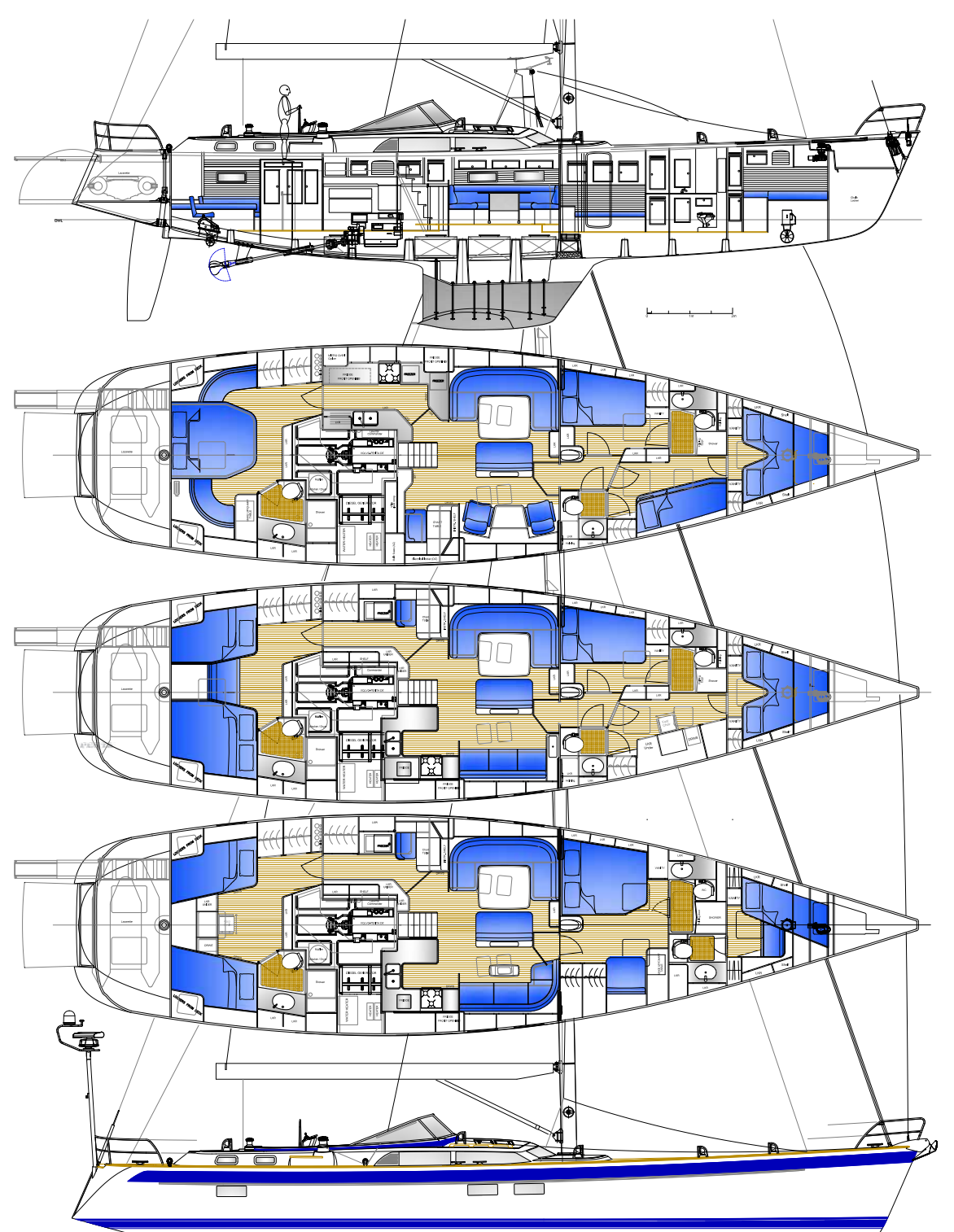


*Sail a classy Hallberg-Rassy*

**HALLBERG-RASSY VARVS AB**  
**HALLBERG-RASSYVÄGEN 1**  
**SE-474 31 ELLÖS, SWEDEN**

**TEL +46-304-54 800**

**[www.hallberg-rassy.com](http://www.hallberg-rassy.com)**



# Hallberg-Rassy

HALLBERG-RASSY VARVS AB  
HALLBERG-RASSYVÄGEN 1  
SE-474 31 ELLÖS  
SWEDEN

TEL +46-304-54 800  
info@hallberg-rassy.se  
www.hallberg-rassy.com



**SPARE PARTS AND ACCESSORIES:** HALLBERG-RASSY PARTS AB, Box 33, SE-474 31 ELLÖS, SWEDEN. TEL +46-(0) 304 549 90. info@hr-parts.com www.hr-parts.com

**ARGENTINA:**  
JOSÉ FRERS, RUBEN DARÍO 3447 (1646) VICTORIA P.B.A.  
TEL +54-11 47 45 05 37. jfrers@josefrers.com

**BULGARIA:**  
FINNINVEST LTD., BOGORIDY St No 59, BG-8000 BOURGAS.  
TEL +359 (0) 56 845 107. finninv@bs.spnet.net

**CROATIA, SERBIA, SLOVENIA, BOSNIA AND HERCEGOVINA, MACEDONIA AND MONTENEGRO:**  
MORE OCEAN D.O.O., SMICKLASOVA 19, HR-10 000 ZAGREB, CROATIA.  
PHONE +385 1 5509501. MOBILE + 385 98 48 38 54. marko@moreocean.hr

**DENMARK:**  
MARINEPARKEN YACHTS ApS, KAMPMANNSVEJ 29, 7000 FREDERICIA  
TEL +45 2018 4191, bo@marineparken.dk

**FINLAND:**  
OY HELLMAN YACHTS AB, TAMMISTONTIE 256, FIN-20900 TURKU.  
TEL +358 (0)2 2581 600, +358 (0) 400 520 454. lassi.hellman@helmarin.fi

**FRANCE:** LJB MARINE, RUE DE LA PERRUCH, GALERIE MARCHANDE DES MINIMES  
46 AVENUE DU LAZARET, FR-17000 LA ROCHELLE. TEL : + 33 (0)5 46 52 19 52  
MOBILE + 33 (0)6 22 88 13 80 info@ljb-marine.com

**GERMANY:** HALLBERG-RASSY DEUTSCHLAND GmbH, AN DER WIEK 7-15,  
DE-23730 NEUSTADT. TEL 04561-55 86 48. info@hallberg-rassy.de

**HOLLAND:** NOVA YACHTING INTERNATIONAL BV, POSTBUS 15, NL-4310 AA  
BRUINISSE. VISITING ADDRESS: JACHTHAVEN BRUINISSE, JACHTHAVENWEG 72,  
NL-4311 NC BRUINISSE. TEL +31-111-48 18 10. info@nova-yachting.nl

**ITALY:** LIONS INT-YACHTS, VIA SALENTO 12, IT-00162 ROMA.  
TEL 06-44 23 75 37. info@hallberg-rassy.it

**JAPAN:** GLOBAL MARINE INC., IMAZU BOAT CENTER 3F, 2-16 IMAZU-NISHIHAMA,  
NISHINOMIYA, HYOGO 663-8225. TEL 0798-34-73 45. info@global-marine.co.jp

**NORWAY:** POLLEN MARITIME AS, BESØKSADR.: DRONNINGEN 1, OSLO.  
POSTADR.: PB A BYGDØY, NO-0211 OSLO. +47 91 77 14 51.  
ole-petter@pollenmaritime.no

**RUSSIA:** JONACOR MARINE, PESOCHNAYA EMB., 18, ST PETERSBURG 197022,  
TEL +7 (812) 702 47 70. info@jonacor-marine.ru

**SPAIN:** STAY NÁUTICA, PUERTO DEPORTIVO, LOCAL 32, ES-08320 EL MASNOU  
(BARCELONA). TELS 93 540 28 25 – 93 540 28 83. info@staynautica.com

**SWEDEN:** HALLBERG-RASSY VARVS AB, HALLBERG-RASSYVÄGEN 1, SE-474 31 ELLÖS  
TEL +46-304-54 800. info@hallberg-rassy.se www.hallberg-rassy.com

**SWITZERLAND:** BOOTSWERFT ROLF MÜLLER AG, BOTTIGHOFEN,  
CH-8574 LENGWIL. TEL 071-688 41 41. rolf.mueller@hallberg-rassy.ch

**TURKEY:** PRIENE TURİZM YATÇILIK SAN. VE TIC. LTD. STI., CEMİLTÖPUZLU CAD.  
104 A/16-17 B BLOK, RAGIP PASA KORUSU 34728 CADDEBOSTAN, İSTANBUL  
TEL: +90 216 4677100. priene@arti-d.com

**UK:** TRANSWORLD YACHTS SAILING LTD, HAMBLE POINT MARINA, SCHOOL LANE, HAMBLE,  
SOUTHAMPTON SO31 4JD. TEL 023-80 45 60 69. enq@transworld-yachts.co.uk

**USA, CT:** EASTLAND YACHTS INC., 33 PRATT STREET, ESSEX, CT 06426.  
TEL 860-767-8224. eyi@eastlandyachts.com

**USA, MD:** FREE STATE YACHTS INC., HERRINGTON HARBOUR MARINA NORTH  
P O BOX 220, DEALE, MARYLAND 20751. TEL: 410-867-9022, 800-871-1333  
sales@freestateyachts.com

**USA, WA:** SWIFTSURE YACHTS, 2500 WESTLAKE AVE. N., SUITE F, SEATTLE WA  
98109. TEL 206 378 1110, info@swiftsureyachts.com